

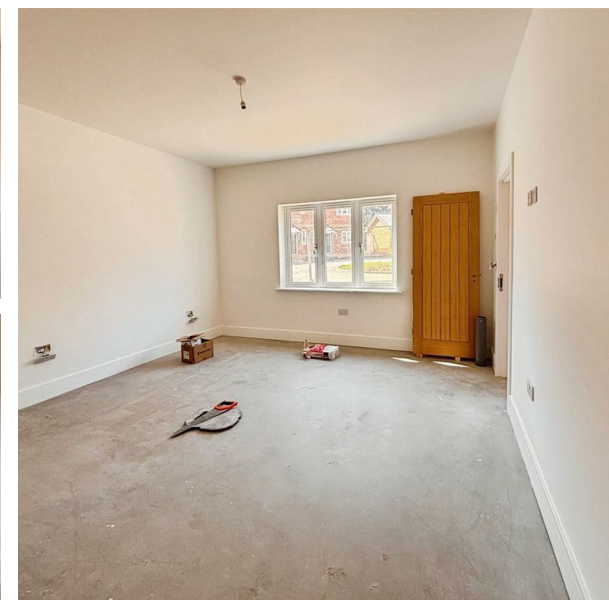
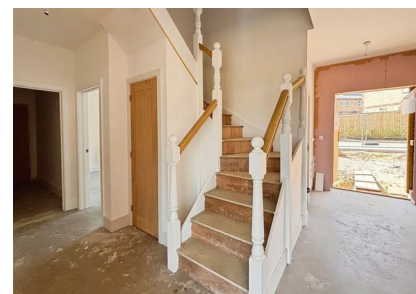
Plot 92, 18 Sunset Drive Meadow View Park, Cowes, Isle of Wight, PO31 7GE

Asking Price £775,000

EPC Rating: Council Tax Band:

ELLIOTT  
LINCOLN  
ESTATE AGENTS & ASSOCIATES

*Reassuringly familiar, refreshingly new*





A stunning detached chalet-style home, Plot 92 Meadow View Park, situated in the highly sought-after development. Designed with modern living in mind, this exceptional new build offers futureproof features alongside spacious and versatile accommodation, totalling an impressive 201m<sup>2</sup> of internal space.

Office 4, Baring Chambers Denmark Road  
Cowes  
Isle of Wight  
PO31 7SY  
01983 642622  
office@elliottlincoln.co.uk  
www.elliottlincoln.co.uk



4 Bedroom - Chalet Bungalow  
Plots 38, 92 and 94  
GF Area - 105 sq m  
FF Area - 96 sq m  
Total - 201 sq m  
(areas exclude Garage)

2 First Floor Plan  
1 : 100

Energy Efficiency Rating		Current	Potential
Very energy efficient - lower running costs			
(92 plus) A			
(81-91) B			
(69-80) C			
(55-68) D			
(39-54) E			
(21-38) F			
(1-20) G			
Not energy efficient - higher running costs			
England & Wales		EU Directive 2002/91/EC	